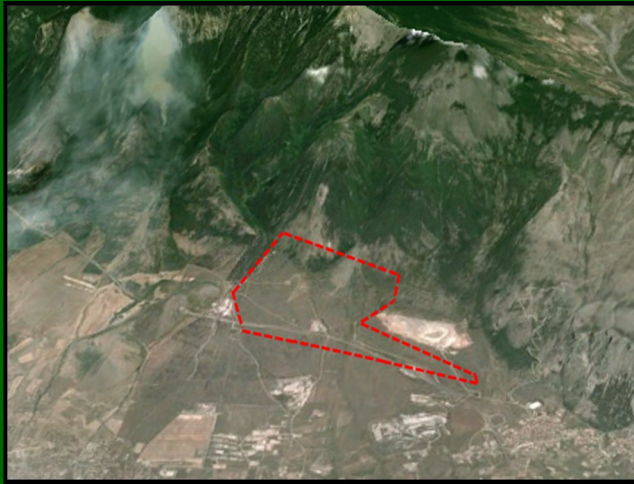


La Petrosa



The area called " La Petrosa " lies in the Castrovillari municipalità (CS), partially within a Site of Community Interest (SCI) -encoded IT9310008, as defined by EU Directive No. 43 of 21 May 1992 and achieved in Italy since 1997. It borders on " Timpone Cappuccio" and " Timpone Pallone " to the north, on the A3 " Salerno -Reggio Calabria" to the south, on the Channel Valle Cupa to the west, while to the east it borders the quarry of Italcementi SpA. It has a largeness of 350 hectares and an height that ranges from a minimum of 550 meters above sea level to a maximum of 832 meters s.l.

In this site we find the Stipa austroitalica, substeppica endemic species of the southern Appennines and it is included in the Habitats directive as species of primary reference, because it constitutes a unique natural beauty. The site also offers a different sorts of endemic plants and orchids. From the point of view of wildlife this area is important for the notable bird diversity both entomological and ornitological. Moreover here, lives a rare Orthoptera, Saga pedo (Sorceress notched), it prefers steppic ground, that denotes an elevated quality of environment.

Website: [www .itcgcastrovillari.it/lamiaterravale.html](http://www.itcgcastrovillari.it/lamiaterravale.html)

How to get there : Take the A3 Salerno-Reggio Calabria , exit Frascineto , take the SP 263 for 3 miles and turn on Via G. Natta and take the first on the right, Via Serra Ciavole as far as the Motorway bridge for about 4 km.

Period: from May to August.



Work done by the class II A of the Technical Institute for Construction, Environment and Territory "Calvosa".

Castrovillari 2013-'14



THE PATH OF ORCHIDS



Nature Trail

ALTITUDE: 790 m Max - Min 595 m

TOTAL ASCENT: 195 m

DIFFICULTY ' : Easy trek

DURATION: 2 h

LENGTH: 4.4 Km

Path way



1. *Ophrys sphegodes*



2. *Ophrys tenthredinifera*



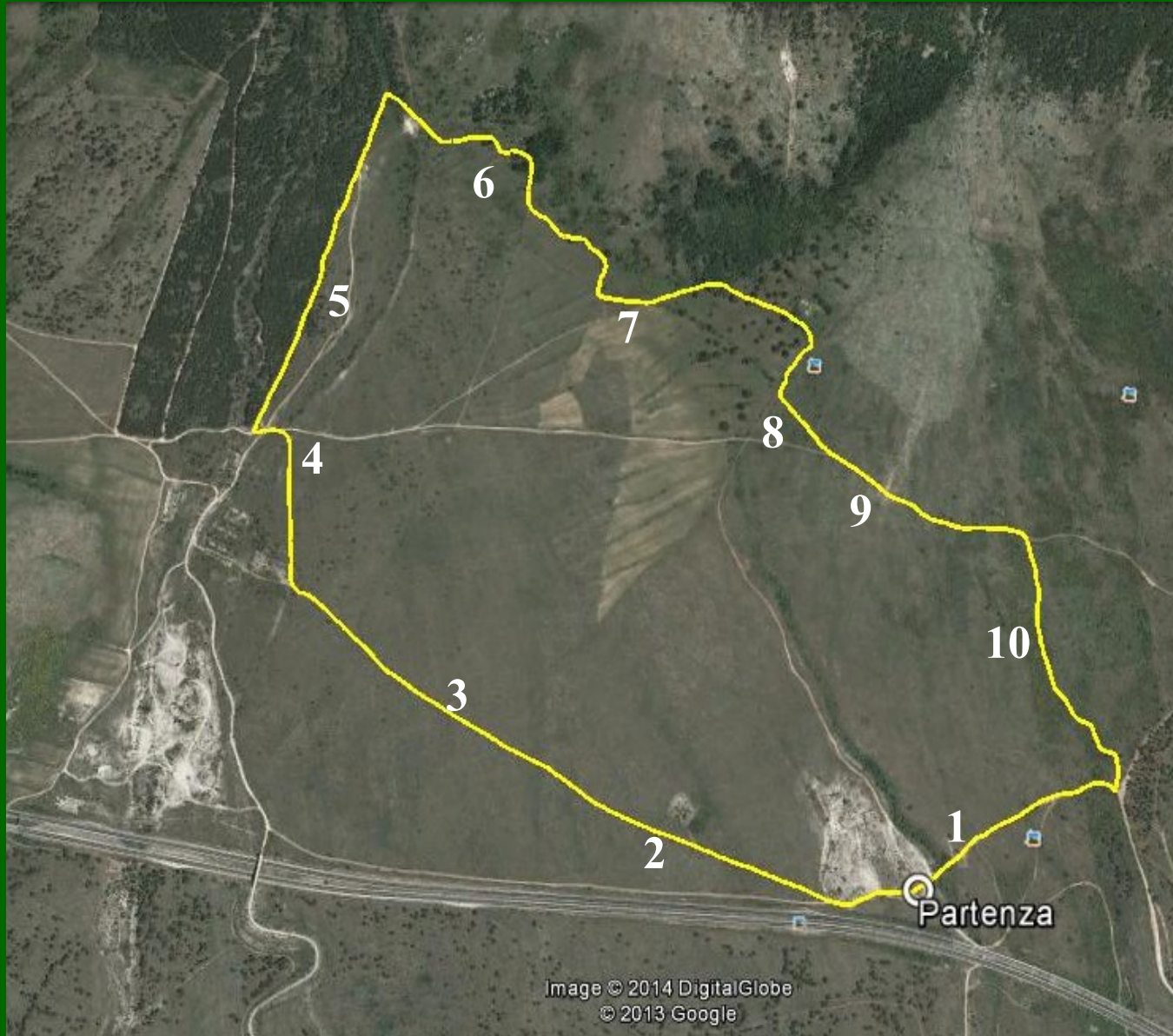
3. *Ophrys lutea*



4. *Ophrys bertolonii*



5. *Anacamptis papilionacea*



6. *Anacamptis pyramidalis*



7. *Ophrys apifera*



8. *O. Coriophora y.*



9. *Orchis italica*



10. *Serapias vomeracea*